

# Planning for the Future of Healthcare in Laguna Beach

## A Collaborative Process Driven by our Mission and Values

We are committed to delivering a healthcare model that prioritizes investments in the healthcare services the community needs today—and well into the future—while upholding our Catholic mission to care for all.

This is a multi-year process, and we are at the starting line, collaborating with the City of Laguna Beach, healthcare partners, EMS and Laguna Beach residents. We will share transparent updates as we move forward.



**Healthcare Utilization:** Laguna Beach residents are accessing care and using the Emergency Department much differently than when the hospital was built in 1959, and even more so in recent years.

**Most patients receiving care at the Laguna Beach Emergency Department could obtain the same exceptional outcomes by receiving expertly managed care in an advanced urgent care setting. \***

- 84% of patients seen at the Laguna Beach Emergency Department in 2025 were treated and discharged.
- 80% arrive by private vehicle, not ambulance.
- 73% arriving by ambulance did not require paramedic accompaniment (non-life-threatening conditions)
- The most critical cases—such as trauma, heart attack stroke, and OB-GYN-related concerns—are routed directly to Providence Mission Hospital in Mission Viejo or other local hospitals for higher-level of care.
- After arriving at the Laguna Beach Emergency Department, only 16% required further hospitalization, and a smaller number of patients, 2.5%, ultimately required transfer from Laguna Beach to Providence Mission Hospital Mission Viejo.

**Inpatient acute care-utilization has declined steadily.**

- From 2003 to 2024, the average inpatient daily census has declined from 83 to 28. In other words, **80% of the hospital's beds are consistently empty.**
- Advances in medicine have fundamentally changed how care is delivered, resulting in reduced long-term admission rates, while increasing state-of-the-art specialized care settings. Examples include:
  - Same-day joint replacement
  - Same-day endoscopy



**The Providence Mission, Sustainability and Viable Models:** As a not-for-profit, faith-based, Catholic mission-driven organization, Mission Hospital Laguna Beach must balance resources to be a long-term healthcare partner in our communities.

- Sustaining the current model at Laguna Beach would require a significant investment of **\$350+ million in services that do not reflect the current or long-term needs of our community.**
- Under California law, operating a free-standing Emergency Department is not an option. At the same time, the data show that our community would receive expert care on a campus featuring advanced urgent care that includes **capabilities beyond a traditional urgent care or retail clinic.**



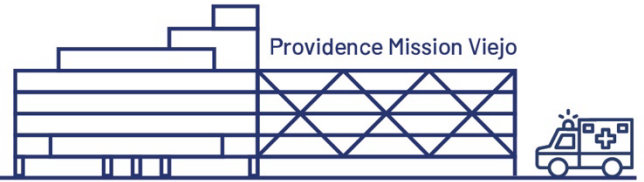
**Collaborative Planning:** We are collaboratively planning a future model that ensures the Laguna Beach community continues to have access to exceptional care in a variety of settings.

- This collaboration includes ongoing discussions with local EMS, physicians, caregivers, community leaders, elected officials and the community at large - who are all important voices in this process.
- We expect to have more to share about a future model in the coming months.

*\* Statistics based on 2025 data*

# Mission Hospital Laguna Beach Emergency Department

**Serious trauma**, heart attack, stroke and OB/GYN-related concerns are taken directly to Providence Mission Viejo or other local hospitals for higher level of care. **They do not stop at the Laguna Beach Emergency Department.**

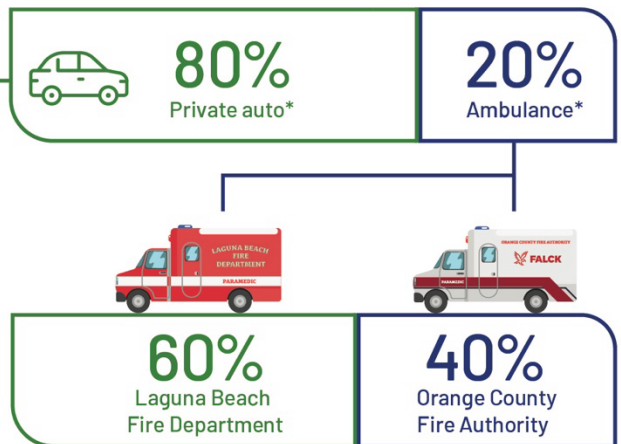


## Of the approximately 17,275 who came to Laguna Beach Emergency Department:

**84%** were treated and discharged; they did not require further hospitalization.

**2.5%** were transferred to Providence Mission Viejo Hospital for higher level of care.

## How Patients Arrive at Laguna Beach ED



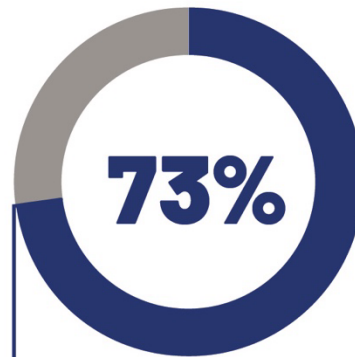
## #DidYouKnow

Today's ambulances are equipped to **provide mobile, intensive, 1 to 1 life sustaining care** when staffed with paramedics.

**46 percent** of patient transports to the Laguna Beach Emergency Department by the Orange County Fire Authority come from Dana Point?

Most common admissions to Providence Mission Hospital Laguna Beach from the Emergency Department are:

- Urinary tract infection
- Acute substance withdrawal
- Dehydration
- Pneumonia



**Basic Life Support**  
EMT care for basic transport

**Advanced Life Support**  
intensive, 1 to 1 lifesaving ambulance care staffed by paramedics

of ambulance arrivals did not require a paramedic accompaniment; these are considered non-life-threatening conditions.



We are exploring all the possibilities of a healthcare delivery model that will continue to care for these patients – and our community at large – with the same expert level of care received today.